



**Infinite
Inclinations LLP**

BUSINESS

SINCE 2017



Business Type
Trader



Major Markets Cover
india



Ownership Type
Partnership Company



Company Turnover
Rs. Less than 1 Crore (or Less Then US\$ 200 K)

Established in 2017, Infinite Inclinations LLP offers and trades top-notch Kansa Thali Foot Massager Machines and Yantras both online and offline. With a strong commitment to quality, competitive pricing, and exceptional customer service, we have established ourselves as a prominent player in the market. Our primary customer base includes hotels, builders, architects, and various other users who recognize the value of our Kansa Thali Foot Massager Machines and Yantras. Moreover, Our business center is strategically located in Pune, Maharashtra, which enables us to efficiently serve the needs of our clients across the country. We have a well-established network of partners and distributors, which ensures that our products reach you promptly and in pristine condition.

Our company is led by Anand Deshmukh, a seasoned professional with an impressive 27 years of experience in the industry. Anand holds a bachelor's degree in Construction Engineering (BE Construction) and has a deep understanding of market dynamics. His expertise and passion for enhancing well-being through our products is what drives our company.

Quality Priority

We firmly believe that quality is non-negotiable, so we take great care in selecting the finest materials for our products and packaging. Our commitment to quality extends to our packaging, as we use robust Corrugated Boxes to ensure your purchase arrives in perfect condition.

Team

We are placed with marketing, a talented group of professionals who are passionate, a customer support team, and delivery experts. All do their task properly and help the business to touch at the zenith level. Also, they keep vigilance in the market so that they can provide what customers demand.

Why Us?

We are here to help you in your wellness journey, providing not only products but also expert guidance and support. Apart from all this, some of the points mentioned below will help in boosting our business and client relations are:-

Product Quality

Dedicated Team

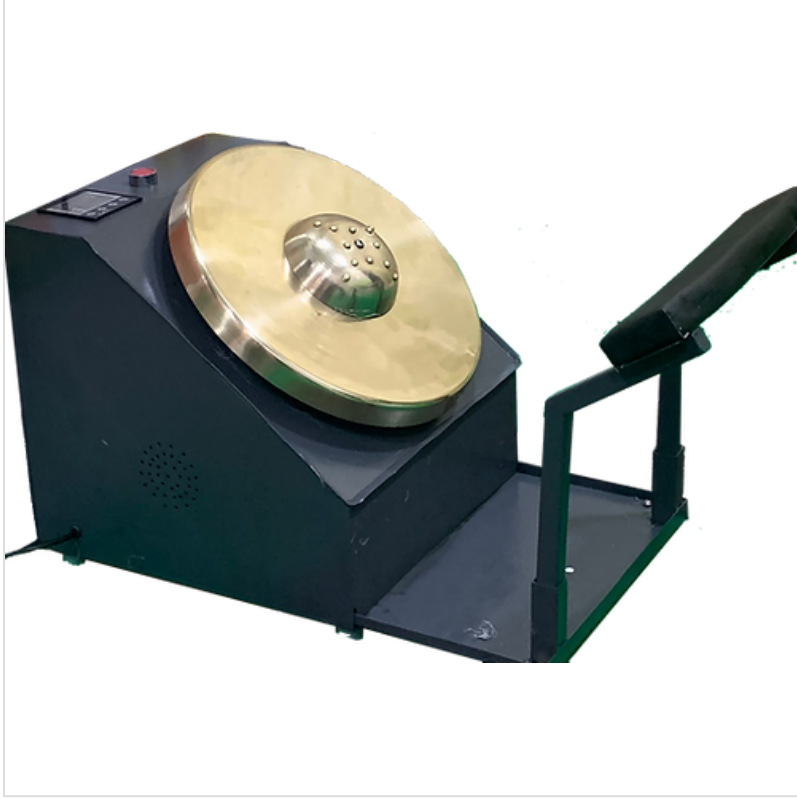
Complete Customer Satisfaction

Expert Support

On-time delivery

Effective packaging material

Affordable Price Range



Kansa Thali Foot Massager

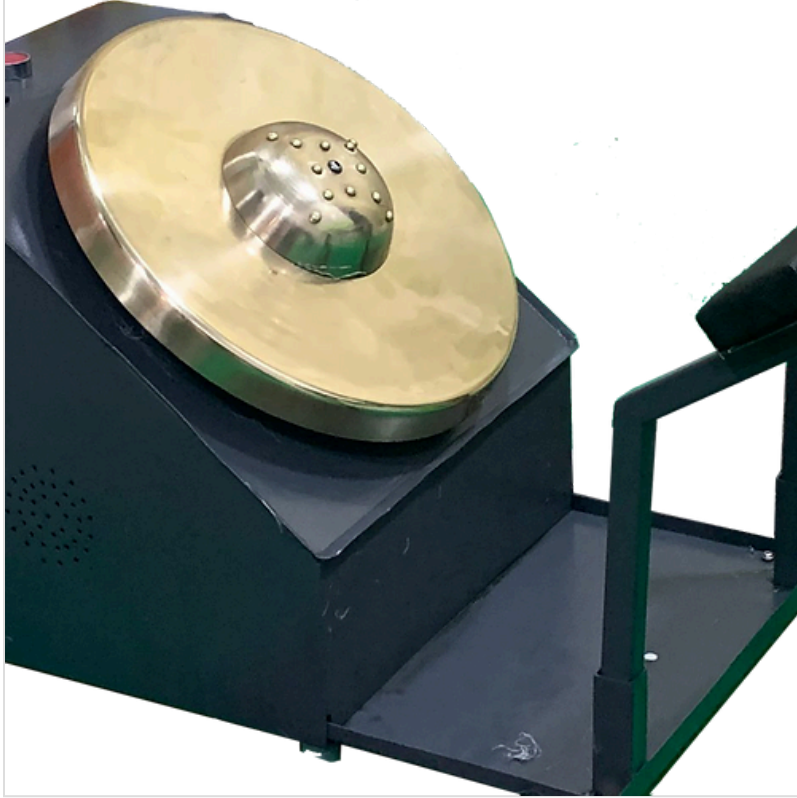
Kansa Thali Foot Massager Machine is a therapeutic device designed for foot massages using Kansa metal, known for its health benefits. It is often used to promote relaxation and relieve stress. Buy in the attractive price range with complete detail parameters.

Thali Foot Massager Features:

- Typically equipped with a Kansa metal plate or dome for massaging the feet.
- Designed for an authentic Ayurvedic foot massage experience.
- The Kansa metal is believed to balance doshas, improve circulation, and reduce inflammation.
- User-friendly design for ease of use.
- Can be used for personal relaxation or by massage therapists.
- Varies in size and design.

Product Details:

Machine Size	Different Sizes
Rust Resistance	Yes
Features	Easier to use, High Performance, Reduce Inflammation, Cost Effective
Pattern	Plain
Mount Type	Floor Mountable



Kansa Thali Foot Massager Yantra

Get Kansa Thali Foot Massager Yantra at an attractive price, a traditional tool used in Ayurveda for foot massages. It usually consists of a Kansa metal plate or dome, designed to enhance the therapeutic effects of foot massages. Have an attractive price range along with all quality satisfaction measures with guaranteed parameters.

Foot Massager Yantra Features:

- Handcrafted from Kansa metal, known for its healing properties.
- Designed to provide comfort and relaxation during foot massages.
- Believed to help balance energy and promote overall well-being.
- Often used in conjunction with massage oils for a soothing experience.
- Comes in various sizes and designs.
- Part of Ayurvedic wellness practices.

Product Details:

Packing Material	Corrugated Box
Technique	Handcrafted
Design	Plain
Style	Traditional
Operation Mode	Electric



Kansya Thali Yantra

Looking for Kansya Thali Yantra at a reasonable price, a traditional Ayurvedic instrument made of Kansa metal and used for various wellness and therapeutic purposes, you are in the best place.

Thali Yantra Features:

- Crafted from Kansa metal, which is a blend of copper and tin.
- Believed to have balancing and healing properties in Ayurveda.
- Available in various shapes and sizes, including plates and domes.
- Used in massage therapies, wellness rituals, and Ayurvedic treatments.
- The metal is considered beneficial for dosha balance and improved energy flow.
- Often used for self-care and holistic well-being.

Product Details:

Adjust Speed Level	Yes
Is It Cordless	No
Packaging Type	Corrugated Box
Minimum Order Quantity	10
Type	Yantra



Sanjeevan Kansya Thali Yantra Machine

Our Sanjeevan Kansya Thali Yantra Machine with a variable range of diameter is a specific size variant of the Kansa metal tool used for Ayurvedic practices and therapies. We have the best price option with scheduled delivery times as well as quality packaging. All the quality parameters are satisfied in complete quality measures.

Kansya Thali Yantra Machine Features:

- A Varied Kansa Thali Yantra designed for various wellness applications.
- Crafted from Kansa metal for its reputed healing effects.
- Used in Ayurvedic massages, energy balancing, and relaxation rituals.
- Suitable for both personal use and professional wellness services.
- Size provides a comfortable surface for a holistic experience.
- Part of traditional Ayurvedic practices.

Product Details:

Features	Easy to Store, Non-Harmful, Compact Design, Promotes Relaxation
Type	Yantra Machine
Machine Size	Customised
Pattern	Solid
Packing Material	Corrugated Box



Sanjeevan 14 Inch Kansa Thali Yantra Machine

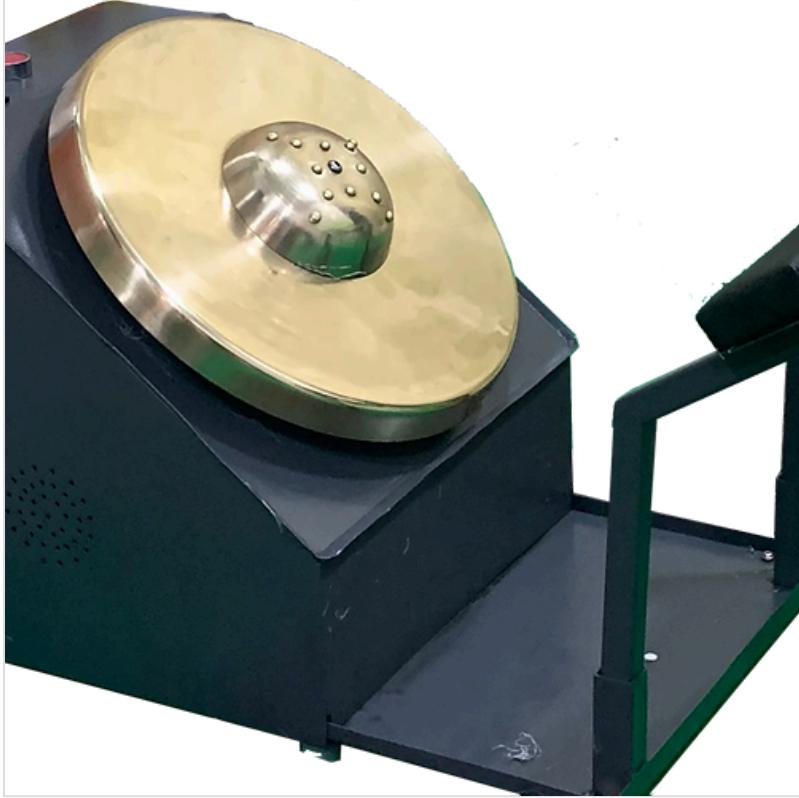
Our Sanjeevan Kansa Thali Yantra Machine with a 14-inch diameter is a specific size variant of the Kansa metal tool used for Ayurvedic practices and therapies. We have the best price option with scheduled delivery times as well as quality packaging.

Kansa Thali Yantra Machine Features:

- A 14-inch Kansa Thali Yantra designed for various wellness applications.
- Crafted from Kansa metal for its reputed healing effects.
- Used in Ayurvedic massages, energy balancing, and relaxation rituals.
- Suitable for both personal use and professional wellness services.
- Size provides a comfortable surface for a holistic experience.
- Part of traditional Ayurvedic practices.

Product Details:

Colour	Black & Golden
Style	Modern
Rust Resistance	Yes
Material	Metal
Operation Mode	Electric



Sanjeevan 10 Inch Kansa Thali Yantra Machine

Sanjeevan Kansa Thali Yantra Machine with a 10-inch diameter is a specific size variant of the Kansa metal tool used for Ayurvedic practices and therapies. We keep it at best price range with qualitative packaging in committed time of delivery.

Kansa Thali Yantra Machine Features:

- A 10-inch Kansa Thali Yantra designed for various wellness applications.
- Crafted from Kansa metal, known for its holistic benefits.
- Used in Ayurvedic massages, reflexology, and energy alignment.
- Suitable for personal well-being routines or professional therapies.
- Compact size offers versatility in applications.
- Part of traditional Ayurvedic wellness practices.

Product Details:

Features	Easy to Operate, Versatility, Low Vibrating, High Strength
Suitable for	Personal & Professional Therapies
Quality	High Quality
Application	Commercial & Residential use
MOQ	10 Unit



Sanjeevan 12 Inch Kansa Thali Yantra Machine

Sanjeevan Kansa Thali Yantra Machine with a 12-inch diameter is a specific size variant of the Kansa metal tool used for Ayurvedic practices and holistic wellness. We are offering it across all over india, in the committed time of delivery in corrugated packaging solution.

Kansa Thali Yantra Features:

- A 12-inch Kansa Thali Yantra designed for a range of wellness applications.
- Crafted from Kansa metal, revered for its potential health benefits.
- Applied in Ayurvedic foot massages, energy balancing, and relaxation techniques.
- Suitable for personal self-care or professional wellness services.
- Medium-sized for versatile use and comfort.
- Part of traditional Ayurvedic holistic practices.

Product Details:

Features	Easy to Store, Non-Harmful, Movable, Rugged Design etc
Colour	Black & Golden
Machine Size	14 Inch
Shape	Round
Rust Resistance	Yes



Contact Details

Person Name

Mr. Anand Deshmukh and Mrs. Reema Chitre

Company Address

Lane No 7, Dahanukar Colony, Kothrud, Pune - 411038, Maharashtra, India

Website

<https://www.dial4trade.com/infinite-inclinations-llp/>